



Positioning

Solutions

Quality Assurance

Technical Support

Consultant Engagements

Project References



CORPORATE BRIEF

DME Prolink is Data communication division of ECS Global Wire

Founded in 1984 with a vision of Innovation and Development in Cable Technology

Established High Tech Facility in Dubai for Middle East Operations in 2004

15 Offices Worldwide with 250+ dedicated Technical Resources

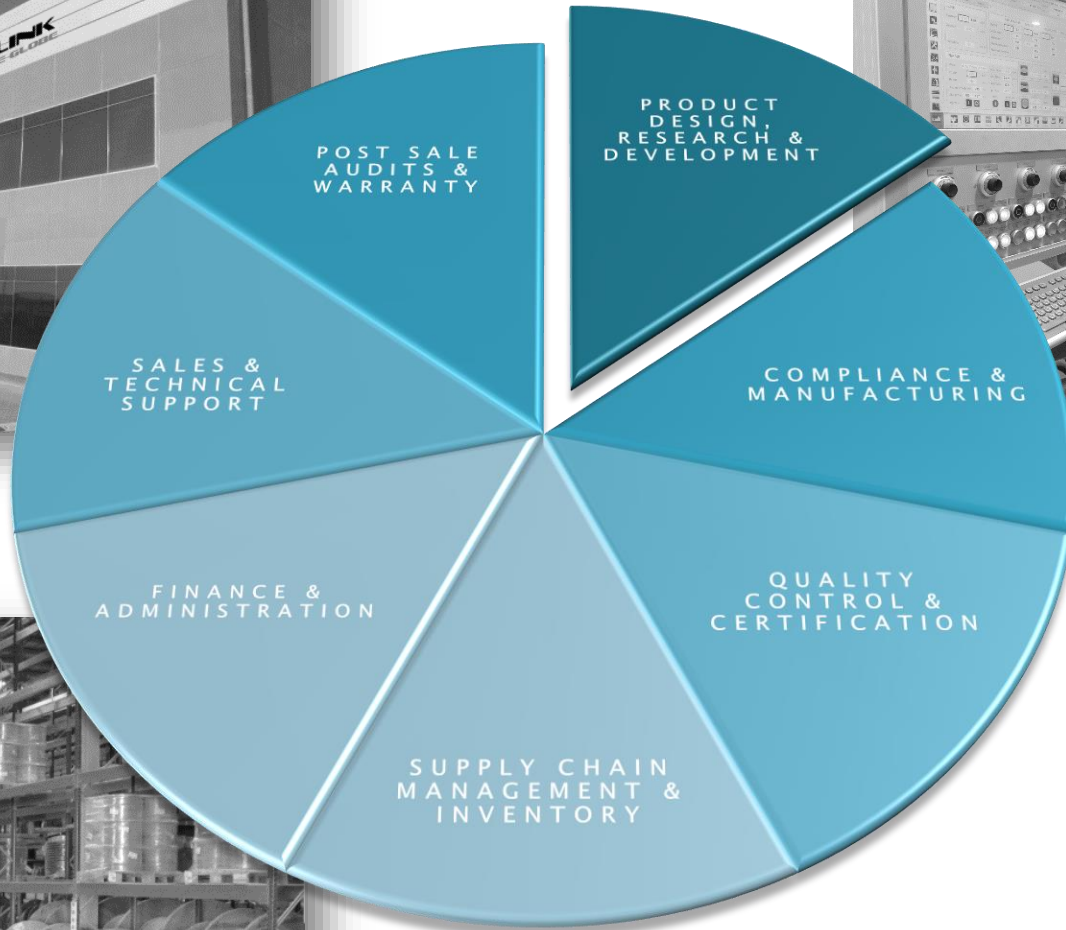
LEED & ISO 9001:2015 Certified Support facilities for MEA Operations

In-house Full-fledged Supply Chain & Inventory Management in Middle East HQ.





REGIONAL POSITIONING



Custom-built 7,400 Sq. m facility as our Middle East Headquarters located in Jebel Ali Free Zone. This high-tech, weather-safe facility is used to service the Middle East, North Africa and the Caspian Independent States markets.



REGIONAL SUPPORT CENTERS



Vancouver

Corporate Head Office /
Canada HQ
3135 - 6900 Graybar Road,
Richmond, BC V6W 0A5
Tel: 604.276.9913
Fax: 604.276.9915

Dubai

Middle East HQ
PO Box 17159
Jebel Ali Free Zone, UAE
Tel: +971 4 8118 000
Fax: +971 4 8809 361

Abu Dhabi

Executive Business Center
P.O. Box 112358
Unit B-01, Building Number
158, Heirs of Saoud
Mohammed Arar Al Dhaheri
Tel: +971 2 6740001
Fax: +971 2 6740066

Doha

B-Ring Road, Bldg 149, PO
Box 91111, Qatar
Tel : +974 44411868
Fax: +974 44110000



TECHNICAL FORTE

DME ProLink meticulously follow BICSI standards & practices.

Full-Fledged certified inhouse Research and Development team

Pre-Sales, Product positioning and Post sale Audits

Standards updates and Best practices on Project Specifications

Design Assistance for Consultants and End users

Partner Enablement programs, Certifications and Consultant Training Events



INDUSTRY COMPLIANCE



International
Organization for
Standardization



- ▶ ISO/IEC 11801 Ed.2: 2002
 - Information technology - Generic cabling for customer premises
- ▶ Amendment 1 - ISO/IEC 11801: Ed. 2.1: 2008
 - Class E_A and Class F_A channels
 - New channel parameters
 - Amendments to channel Classes D, E and F
- ▶ Amendment 2 - ISO/IEC 11801 Ed 2.2: 2010
 - Published April 2010
 - Contains
 - Class E_A and Class F_A links
 - OM4
 - 40 & 100 Gigabit Ethernet
 - Fibre Channel
- ▶ Amendment 3 - currently underway

- ▶ ANSI/TIA-568-C Published 2009
 - ANSI/TIA-568-C.0 Generic Telecommunications Cabling for Customer Premises
 - ANSI/TIA-568-C.1 Commercial Building Telecommunications Cabling Standard
 - ANSI/TIA-568-C.2 Balanced Twisted-Pair Telecommunications Cabling and Components Standard
 - ANSI/TIA-568-C.3 Optical Fibre Cabling Components Standard
 - ANSI/TIA-568-C.4 Coaxial and Broadband Components (Released August 2011)

(Revised recently to ANSI/TIA 568.2-D in 2018)

- ▶ BS EN 50173 Information technology - Generic cabling systems
 - BS EN 50173-1:2011 Part 1: General requirements
 - The combination of the standard and the amendments + A1:2009 + A2:2011
 - BS EN 50173-2:2007 Part 2: Office premises
 - BS EN 50173-3:2007 Part 3: Industrial premises
 - BS EN 50173-4:2007 Part 4: Homes
 - BS EN 50173-5:2007 Part 5: Data centres
 - BS EN 50173-6:2013 Part 6: Distributed Building Services



SOLUTION OFFERINGS



Copper
Connectivity



Fiber
Optics



FTTx
Solution



Cabinets &
Accessories



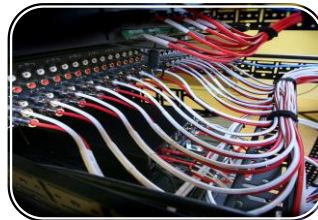
Hybrid
Datacenter



Intelligent
Management



Outside
Plant



Specialty
Cables



Cable
Management

ETHERNET COPPER CABLE RANGE

CAT8.1



Year: 2018 | Freq. Characterization: 2000MHz |
Application: 40G | Types: Shielded

CAT7A



Year: 2010 | Freq. Characterization: 1000MHz |
Application: 10+G | Types: Shielded

CAT7



Year: 2002 | Freq. Characterization: 600MHz |
Application: 10G | Types: Shielded

CAT6A



Year: 2008 | Freq. Characterization: 500MHz |
Application: 10G | Types: Unshielded & Shielded

CAT6



Year: 2002 | Freq. Characterization: 250MHz |
Application: 1G | Types: Unshielded & Shielded

CAT5e



Year: 1999 | Freq. Characterization: 100MHz |
Application: 100base-T | Types: Unshielded & Shielded

CAT3



Year: 1991 | Freq. Characterization: 16MHz |
Application: 10base-T | Types: Unshielded

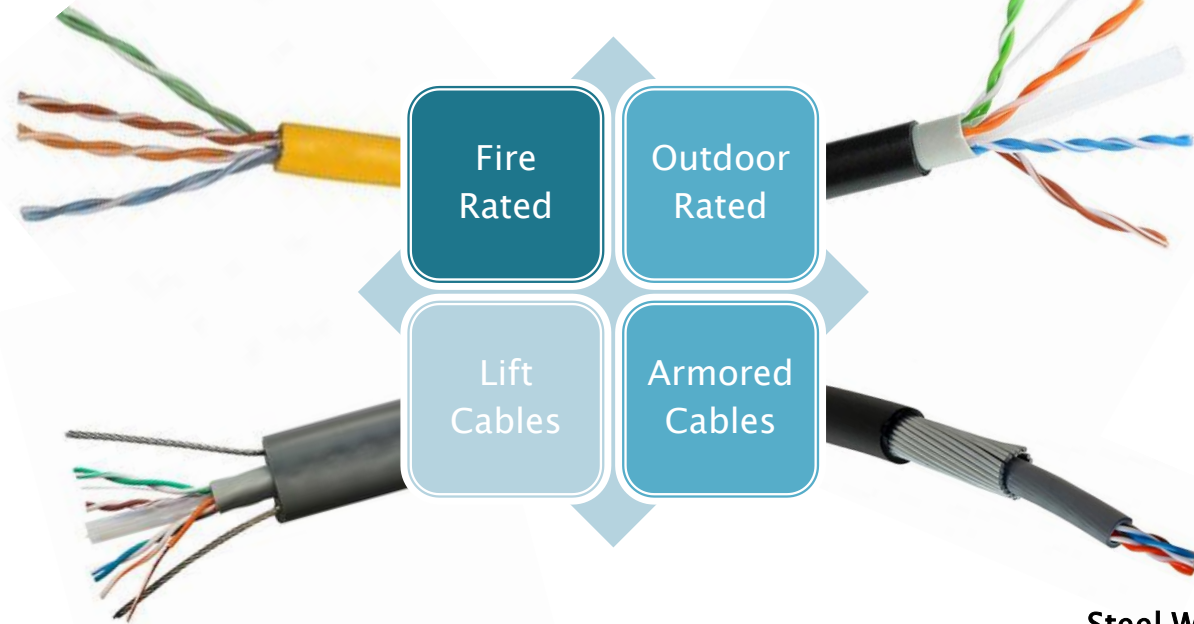
DISTINCTIVE ETHERNET CABLES

120 Minutes Circuit Integrity

Compliance to IEC 60331-25
CAT6, CAT6A Ethernet Cables

Double Jacketed PVC/LSZH/PE

UV Protection
CAT6, CAT6A Ethernet Cables



Fire
Rated

Outdoor
Rated

Lift
Cables

Armored
Cables

Max. Pull Force: 1550N

TIA/EIA 568.2-D, EN50173-1 and
ISO/IEC 11801-1
CAT6, CAT6A Ethernet Cables

Steel Wire Armor (SWA)

Double Jacket/Direct Burial Type
CAT6, CAT6A Ethernet Cables

TYPES OF SHIELDING & SHEATH

U/UTP

Overall Unshielded with Unshielded Twisted Pairs

F/UTP

Overall Foil Screened with Unshielded Twisted Pairs

U/FTP

Overall Unscreened with Foil Screened Twisted Pairs

S/FTP

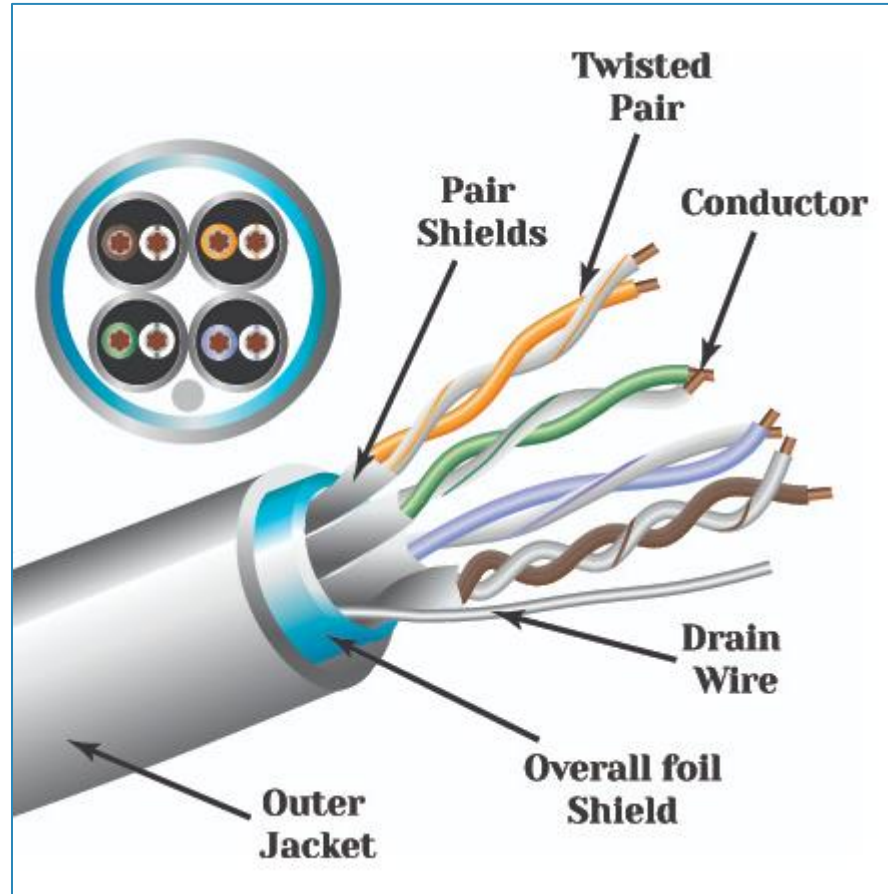
Overall Screened Braid with Individual Foil screened Twisted Pairs

F/FTP

Overall Foil screened with Individual Foil screened Twisted Pairs

SF/UTP

Overall Screened Braid & Foiled with Unshielded Twisted Pairs



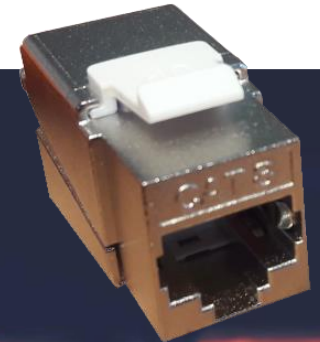
LSZH

PVC

PE

PLENUM

MODULAR CONNECTORS

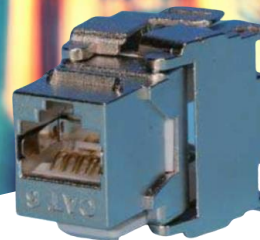
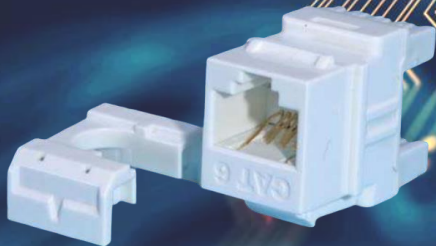


Connector Category : CAT5e | CAT6 | CAT6A | CAT8.1

Shielding: Screened | Unscreened

Orientation: Angled | Straight

Compliance: ANSI/TIA 568.2-D & ISO/IEC 11801



PRESENTATION PANELS



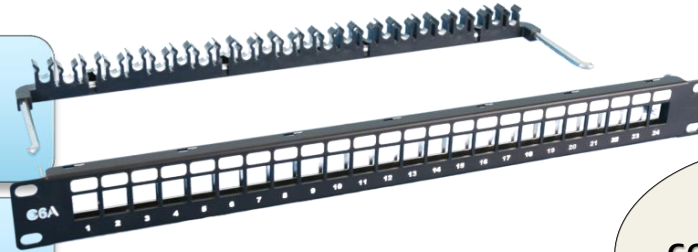
Type of Patch Panel: Loaded and Unloaded

If Loaded, then Category of Patch Panels:
CAT3, CAT5e, CAT6, CAT6A

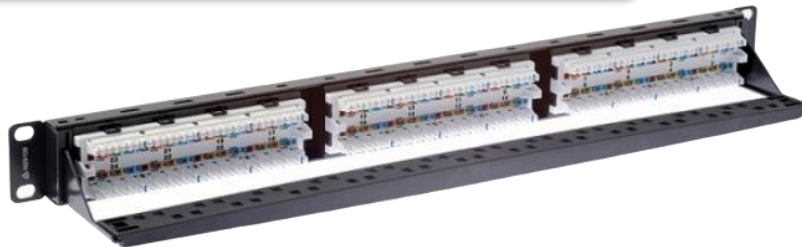
Shielded and Unshielded

Orientation: Angled and Straight, Staggered

Compliance: ANSI/TIA 568.2-D & ISO/IEC
11801



Multiple configurations available



PATCHING SYSTEM

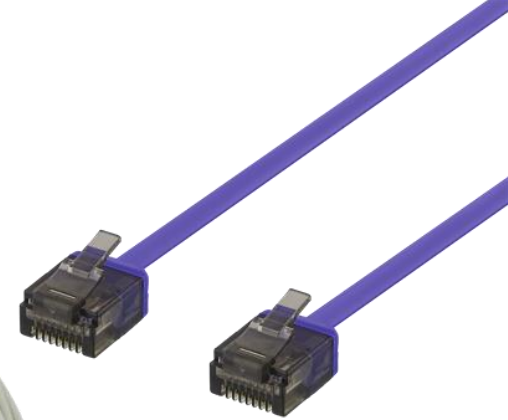
Category: CAT3, CAT5e, CAT6, CAT6A, CAT8.1

Shielded and Unshielded

Compliance: ANSI/TIA 568.2-D & ISO/IEC 11801

Jacket: PVC, LSZH, PE (Outdoor)

Type: Standard, Slim and Flat Profiles

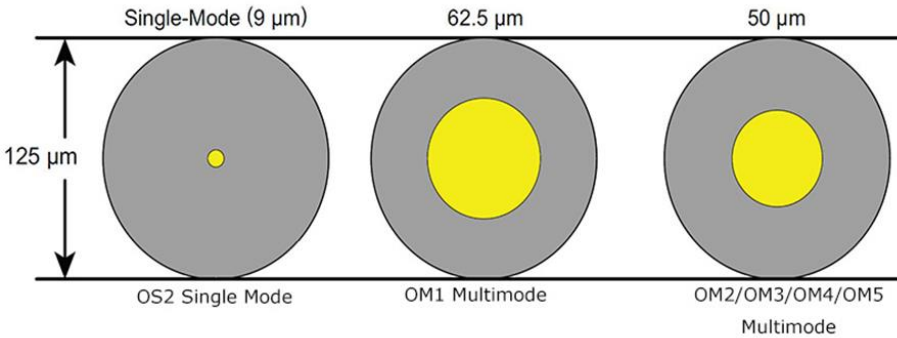


Customized Colors and Length



FIBER OPTICS

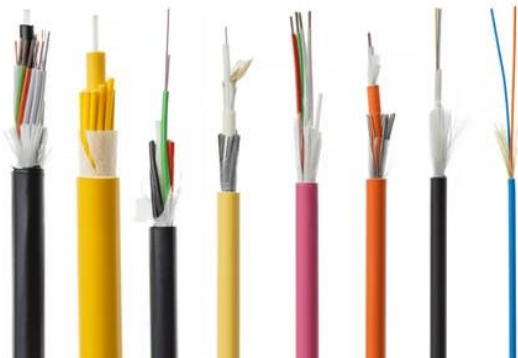
Optical Fiber Core Diameters



Standards:
ANSI/TIA-568.3-D & IEC 60793 / IEC 60794

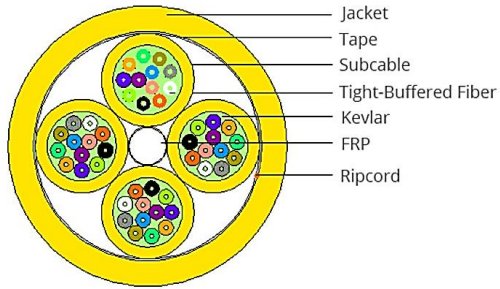
Available
in ITU-T
G.652D
G.657A1
G.657A2
G.657B2
G.657B3

Fiber Optic Cable Type		Fiber Cable Distance				
		Fast Ethernet 100BASE-FX	1Gb Ethernet 1000BASE-SX	10Gb Base SE- SR	40Gb Base SR4	100Gb Base SR10
Single mode fiber	OS2	200m	5000m	10km	/	/
Multimode fiber	OM1	200m	275m	/	/	/
	OM2	200m	550m	/	/	/
	OM3	200m	550m	300m	100m	100m
	OM4	200m	550m	400m	150m	150m
	OM5	200m	550m	300m	400m	400m



FIBER OPTIC CABLE

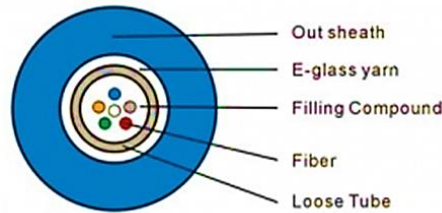
Distribution Tight Buffered



Indoor



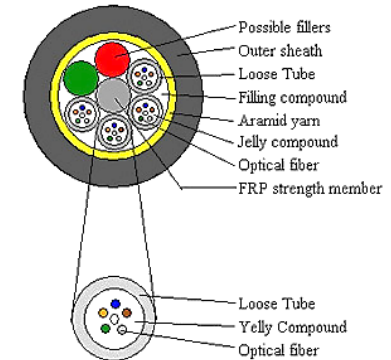
Central Loose Tube



Indoor / Outdoor



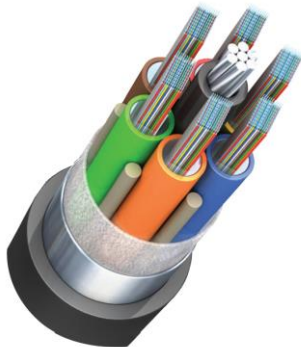
Multi Loose Tube



Outdoor

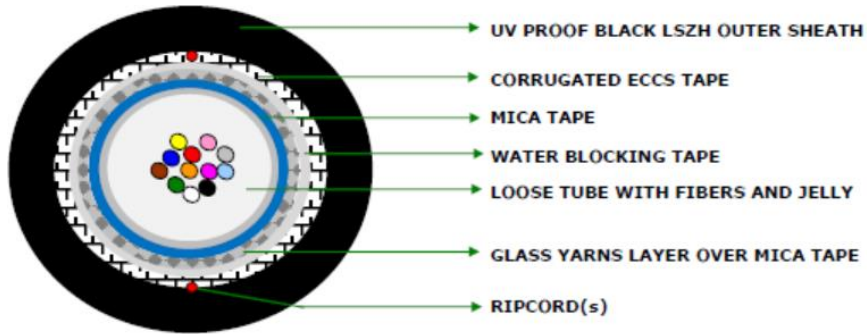


Ribbon Fiber



- Fiber Count from 2 Core to 1200 Core
- Armored Versions available in Dielectric and Metallic
- Gel Free Micro Module FO Cable for Riser
- Ribbon Fiber Configurations 4F, 8F, 12F
- Factory Tested for Tensile Strength, Crush Resistance, Impact Resistance, Repeated Bending, Torsion, Water Penetration, Temperature Cycling
- Fiber Color Coding as ANSI/EIA/TIA 598
- Packing available in Bakelite, Wooden or Ironwood Drums

FIRE RATED FIBER CABLES



Compliance:
IEC 60331-25 / IEC 60793

- Fiber Count from 2 Core to 144 Core
- Armored Construction
- Factory Tested for Tensile Strength, Crush Resistance, Impact Resistance, Repeated Bending, Torsion, Water Penetration, Temperature Cycling
- Fiber Color Coding as ANSI/EIA/TIA 598
- Packing available in Bakelite, Wooden or Ironwood Drums
- Proven Fire Resistance beyond 120 Minutes

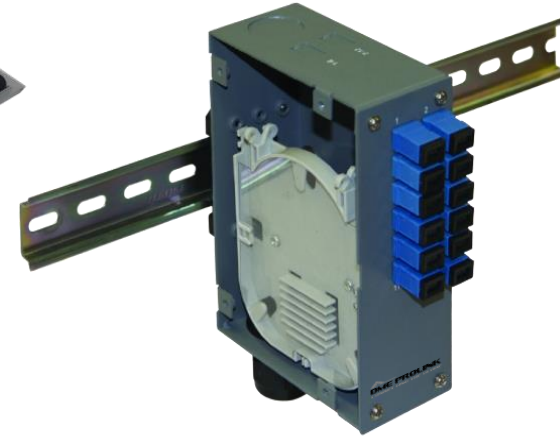
120 MINUTES

DME PROLINK
CONNECTING THE GLOBE



FO PATCH PANELS

HD



Rack Mount and DIN Rail Mount Versions

Available in Swing and Slide options

Space Optimization

Built-in Splice Trays

Panels available from 12 Port to 144 Port

Designed to accommodate 30mm Bend Radius

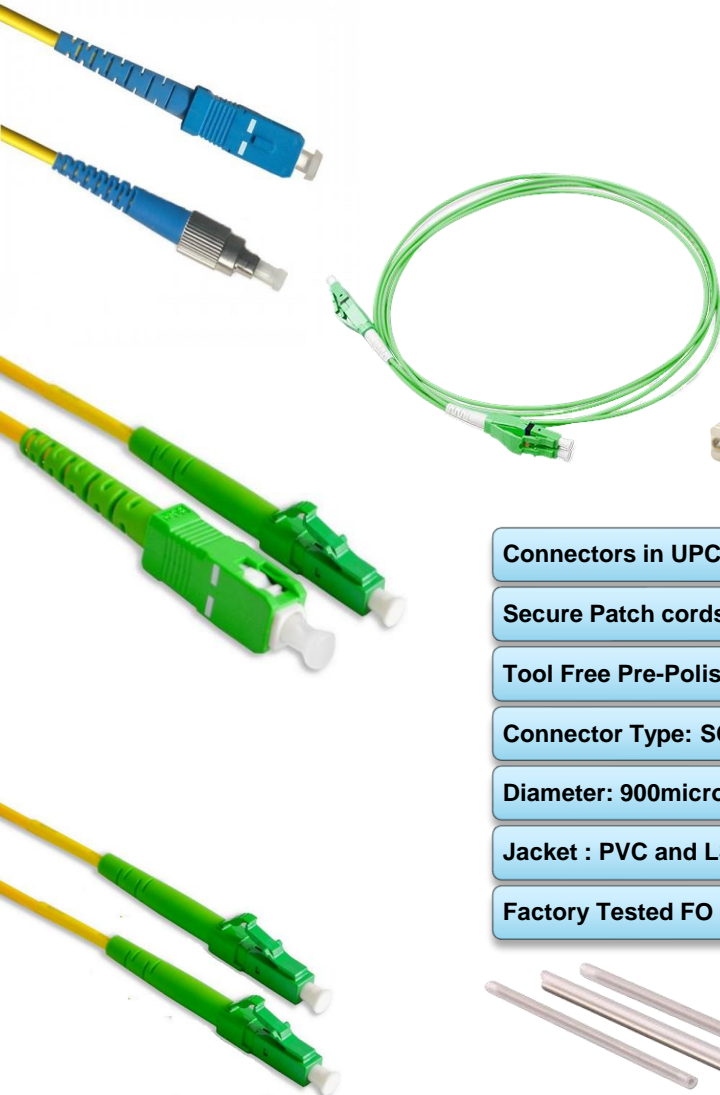


FIBER OPTIC ACCESSORIES

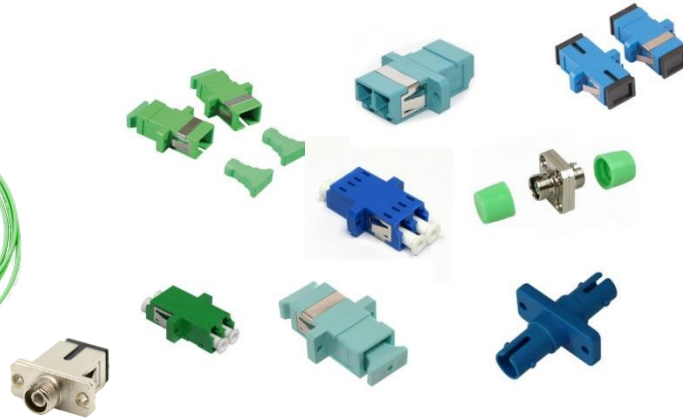
Standards:

IEC 61754-4 / IEC 61754-20 / IEC 61754-13

Patch Cords/ Pigtails



Adapter



Connector



- Connectors in UPC and APC available
- Secure Patch cords and Connectors
- Tool Free Pre-Polished Connectors
- Connector Type: SC, LC, FC, ST, MTRJ, E2000
- Diameter: 900microns, 2.0mm, 3.0mm
- Jacket : PVC and LSZH
- Factory Tested FO Patch cords and Pigtails

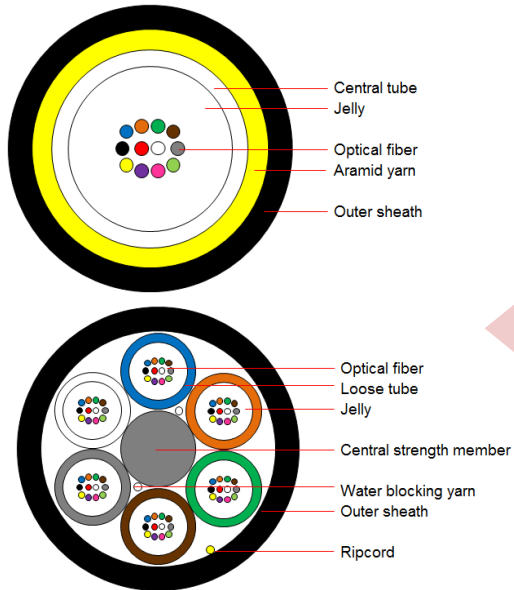


AIR BLOWN FIBER

Standards:

ANSI/TIA-568.3-D & IEC 60793 / IEC 60794

Micro/Mini FO Cable



Scalability

Future Proofing

Phased Investment

Faster Deployment

Accessories



Air Compressor



Air blowing Equipment



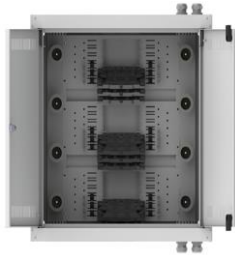
Micro Ducts



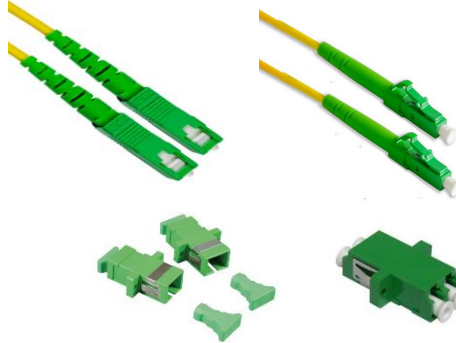
DME PROLINK
CONNECTING THE GLOBE

FTTx SOLUTION

Micro/Mini ODF



FO Connectivity



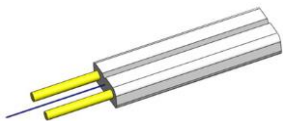
ONU Enclosures



FO PLC Splitters



FTTs Cables



Standards:

ANSI/TIA-568.3-D & IEC 60793 / IEC 60794
& ITU-T G.652D, G.657A1/A2, G.657B2/B3

- 2F and 4F Drop Cables
- 2-Port & 4-Port Micro ODF
- LC/APC and SC/APC Connectivity
- 150mm & 350mm Deep Cabinets
- 2:32, 2:16, 2:8 and 2:32 Splitters in LC/APC and SC/APC Configurations
- Gel Free Micro Module FO Cable for Riser
- Pre-Loaded Mini ODF (Max 48F)
- Splice Only Mini ODF (Max 288F)
- Retractable FO Cable
- Patch Free FDH
- All products tested and approved by Service Providers

WALL MOUNT CABINETS

- Tested and Certified for Anti-Corrosion
- Mounting Space available from 6RU to 27RU
- Standard depths 120mm to 800mm
- Width 600mm
- Comes with Universal Lock and Keys
- Dual Section Cabinets available
- Optional Perforated Metal or Glass Door
- Built-in Cooling Fan Units
- Top & Bottom Cable entry provisions
- Models: Surface Mount / Flush Mount
- Customized color variance
- Additional Accessories: PDUs, Shelves, Leveling Feet / Castors, Screws & Cage Nuts, Mounting Frames
- Load Bearing Capacity: Up to 60Kg

Standards:

EIA 310

EN 61587-1

EN 62208

CE 2006/95/EC Low Voltage Directive 2004/108/EC

Electromagnetic Compatibility Directive

ASTM B117-16



FLOOR STANDING

- Tested and Certified for Anti-Corrosion
- Mounting Space available from 27RU to 48RU
- Standard depths 600mm to 1400mm
- Width 600mm / 800mm
- Access Controlled Locking System
- Single / Dual Door options
- Optimized Air flow design
- Built-in Cable Management
- Top & Bottom Cable entry provisions
- Thermostat controlled Fan Units
- Environmental Monitoring System
- Customized color variance
- Additional Accessories: PDUs, Shelves, Leveling Feet / Castors, Screws & Cage Nuts
- Load Bearing Capacity: Up to 1400Kg

Standards:

EIA 310

EN 61587-1

EN 62208

CE 2006/95/EC Low Voltage Directive 2004/108/EC

Electromagnetic Compatibility Directive

ASTM B117-16



CO-LOCATION CABINETS

- Tested and Certified for Anti-Corrosion
- Mounting Space available from 27RU to 48RU
- Customized Compartmentation
- Standard depths 600mm to 1400mm
- Width 600mm / 800mm
- Access Controlled Locking System
- 3-Point locking System
- Single / Dual Door options
- Optimized Air flow design
- Built-in Cable Management
- Top & Bottom Cable entry provisions
- Thermostat controlled Fan Units
- Environmental Monitoring System
- Customized color variance
- Additional Accessories: PDUs, Shelves, Leveling Feet / Castors, Screws & Cage Nuts
- Load Bearing Capacity: Up to 1400Kg



CABINET ACCESSORIES



- PDUs (Vertical/Horizontal)
- Fan Cooling Units
- Shelves
- Vertical Cable Managers
- Patching Bracket
- Blank Filler Panels
- Heavy Duty Castors
- Leveling Feet
- Baying Kit
- Plinth
- Grounding Kit
- Lighting Modules

CUSTOM MADE CABINETS

- Tested and Certified for Anti-Corrosion
- Protection Grade: IP55 to IP68
- Mounting Space available from 6RU to 27RU
- Solar Panel Enabled
- Metal Sheet: Galvanized Sheet, 201 Stainless Steel, 304 Stainless Steel
- Access Controlled Locking System
- Customized Color Options

Cooling Method:

- Air Conditioned
- Heat Exchanger
- Thermostat enabled Fan Control Units
- Works with principle of Cooling with Ambient Air
- Maximum Cooling Output: Up to 2000W
- 1 Year Product Warranty on Cooling Unit



Standards:

- IEC60529
- IEC61000-4 Electromagnetic Compatibility
- IEC335-1 Safety Requirement
- IEC68-2 Environmental Requirements
- CE Third Party Certification



- Custom made for Special outdoor Applications
- Elite Design with Dust Proof property
- Corrosion resistant finish for longer life
- Access Controlled Locking System

POWER DISTRIBUTION UNITS

Intelligent PDUs



- Remote ON/OFF
- Remote Power Consumption Monitoring
- Cabinet Micro-Environment Monitoring
- Quartile Control Monitoring
- Temperature & Humidity
- Water Leakage
- Smoke Detection
- Integration with Alarm Sirens & Strobes

Scalability

Hot plug modules such as lightning protection, AC/DC intelligent meter and sensors can be selected

High Precision

Accuracy: Max 1% Change on Current and Voltage Measurement; 0.5 °C Change on Temperature measurement

Network Modes

- Supports:
- Cascade connection,
 - parallel connection
 - Series parallel

Robust

Linux based embedded systems used.

Standard PDUs

- High Flexibility
- High Intelligence
- High Reliability
- Low Temperature Rise
- Low Energy Consumption
- Integration for Circuit Monitoring



C13 Plug



C20 Plug



Industrial 5core Plug



Industrial 3core Plug



Industrial Socket



Lockable C13 Socket



Monitoring Module



HYBRID DATA CENTERS – PASSIVE CONNECTIVITY

Pre-terminated Copper & Fiber

Standards:

ANSI/TIA 568.3-D
Telcordia GR-326-CORE
IEC 61754-7
TIA 605-4 (FOCIS 5)
CE (EN 50575 CPR)

- Available in OS2, OM3, OM4
- CAT6A and CAT8 Pre-terminated Copper Cables
- HD Fiber Closure Models: 1U (144 cores), 2U (288 cores), 4U (576 cores)
- Light Weight Design (Aluminum) for Fiber Closures
- Easy Plug and Play MTP/MPO Fiber Cassettes
- Rivet buckle lockable design avoid sliding
- Factory Terminated and Tested Trunk Cables (8 core-144 core)
- Polarity: Type A, Type B and Type C
- 0.35 dB Low loss connector

DME PROLINK
CONNECTING THE GLOBE

DATA CENTERS RACEWAYS



- Manufactured from Halogen Free materials
- Flame Retardant UL94V-0
- Heavy Duty & Sturdy Material
- Designed for Faster Deployment, High Flexibility and easy maintenance
- Electro zinc (EZ) for Indoor Use, Hot Dip Galvanized (HDG) for outdoor Use
- Excellent ventilation & Reduced dust retention


RoHS
Compliant

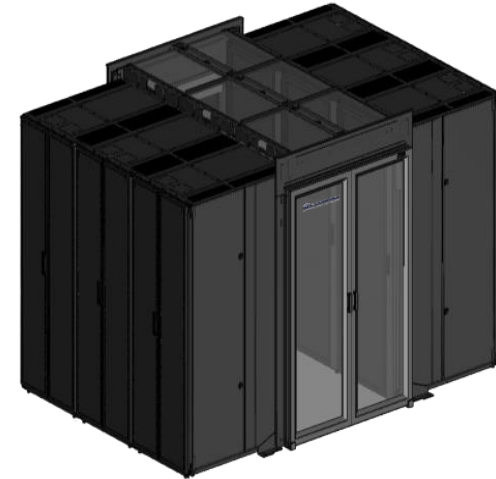

DME PROLINK
CONNECTING THE GLOBE

ISLE CONTAINMENTS

Hot Aisle

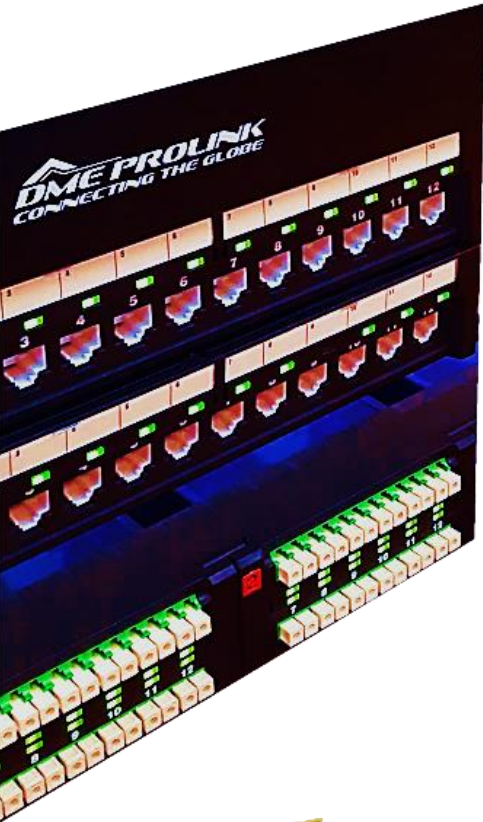


Cold Aisle



- Stand alone support structure, Sliding door, blanking panels and roof panels will maximize utilization on retrofit in both Hot and Cold Aisle Containment.
- Rapid Deployment made easier on Slab based or Raised floor Data center deployment.
- Enhanced Reliability and protection.
- Hotspot Negation and efficient heat management to save space in new build or retrofit.
- Optimized Air flow distribution by preventing of hot air and cold air.
- Improved Thermal performance of the cooling units by raising supply air set point temperature and higher return air temperature.

INTELLIGENT MANAGEMENT



- Follow ANSI/TIA/EIA-606-A Standard, Class 4
- Highly Robust Intelligence enabled MCUs used DME ProPatch Intelligent Solution
- Plug & Play Intelligent Fiber MPO Modules used with High Density Fiber Patch Panels
- Dual Color LED indicators for Patching Status in Copper & Fiber Patch Panels.
- Standard Ethernet Patch Leads used for DME ProPatch Intelligent Solution
- Highly scalable Modular system to facilitate easy modification
- Enabled with Real Time Monitoring and reporting
- Minimal Intelligent enabled hardware components used
- Seamless Intelligent Hardware Integration with BYOD



Serial Cable



Intelligent Patch Panel

Slave MCU



Master MCU



SC MPO Cassettes

Intelligent Jacks



LC MPO Cassettes



INTELLIGENT MANAGEMENT

- ▶ Proactively monitor and manage assets with Real Time Alert - On premise and cloud
- ▶ Consolidate L1 and L2 support by integrating defined tasks and ticket tool mechanisms
- ▶ Reduces non-compliance by facilitating asset management & network documentation
- ▶ User friendly system design enables users to save costs in training, management & maintenance.
- ▶ Detailed Network visibility to record & document all Moves, Adds and Changes
- ▶ Supports both Interconnect and Cross-connect design

Real-time Monitoring – Vulnerability, validations and compliance

Patch monitoring – OS Level, Application level and network devices.

“Supports entire range of cloud services and IP devices”



- ▶ Seamless Integration with Cisco | RedHat Linux | Microsoft Windows | SuSe Linux | VMWare ESXi | Juniper | Apple Mac | AIX
- ▶ Customizable Alerting – set thresholds for various counters and get alerted via Emails

OUTSIDE PLANT SOLUTIONS

Telecom Feeder Panel



FTB



- ▶ Customized products for multiple Outdoor applications
- ▶ Ingress Protection in Copper and Fiber Applications
- ▶ RoHS Compliant
- ▶ Optimized design for accommodating higher density for Copper and Fiber
- ▶ Most sort after product range by Telecom Operators
- ▶ Supports Industrial, Hazardous and Oil & Gas Applications
- ▶ Wide Range of Copper and Fiber products to be deployed for Critical security applications

Fiber Distribution Hub



Fiber Pedestals



HD FO Enclosure



Inline FO Enclosure



IP Rated TO

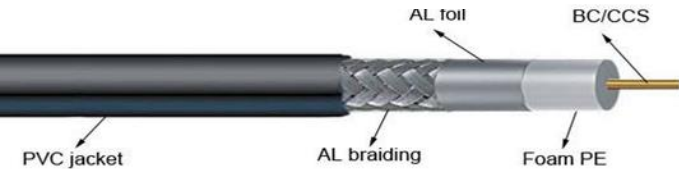


20 2 900

SPECIALTY CABLES



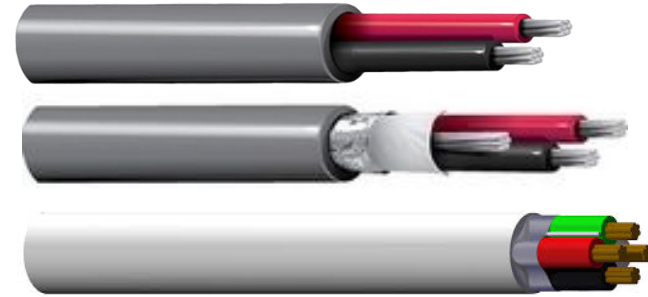
Smart home and building solutions.
Global. Secure. Connected.



Coaxial Cable

- ▶ RG59, RG6, RG11
- ▶ Sheath : PVC, LSZH
- ▶ RoHS Compliant
- ▶ Supporting SMATV, Security Radio Communication application
- ▶ Supreme EMI protection

Standards:
ANSI/TIA 568.4-D
ISO/IEC 11801-1:2017



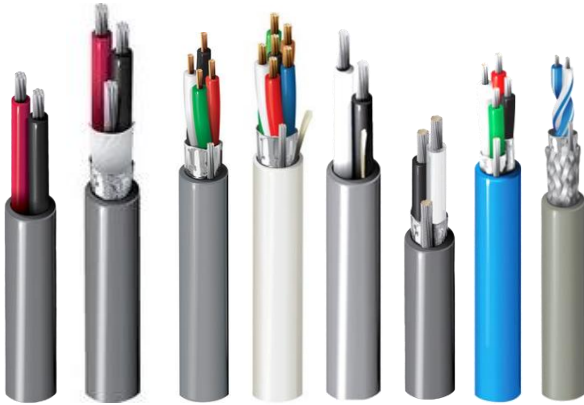
Speaker Cable

- ▶ 2C, 3C and 4C Tinned Copper or Bare Copper
- ▶ Insulation: PVC, FR-PVC, PP
- ▶ Unshielded and Shielded
- ▶ 12AWG, 14AWG, 16AWG, 18AWG, 20AWG, 22AWG
- ▶ Outer Sheath: PVC, FR-PVC and LSZH
- ▶ Belden Equivalent: 5000, 5100, 5200, 5300, 5400, 5500 UE/UH

Certification & Approvals

ISO9001, ISO14001, OHSAS18001
UL444, UL13
RoHS: Compliant Directive 2011/65/EU
CPR E class

CONTROL CABLES



- ▶ 2C, 3C, 4C, 6C Tinned Copper or Bare Copper
- ▶ Insulation: PVC, FR-PVC, PE
- ▶ Unshielded and Shielded
- ▶ 12AWG, 14AWG, 16AWG, 18AWG, 20AWG, 22AWG, 24AWG
- ▶ Outer Sheath: PVC, FR-PVC, LSZH, PE
- ▶ Indoor and Outdoor Versions
- ▶ Belden Equivalent: 8471, 8719, 8723, 8760, 8771, 9740, 9841, 9842, DEDN182U, 6504FE, 4202FE

Certification & Approvals

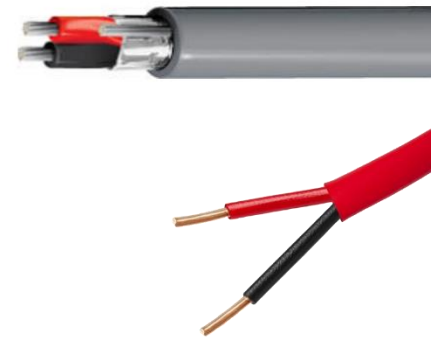
ISO9001, ISO14001, OHSAS18001

UL444, UL13, UL1666

PVC: IEC 60332-1-1/2; CPR Eca

RoHS: Compliant Directive 2011/65/EU

- BMS System
- Lighting Control
- Home Automation
- CCTV
- Video Intercom
- Door Access Control
- Lift Access Control
- Public Address
- Fire Alarm
- Parking Management
- AV System
- Master Clock System

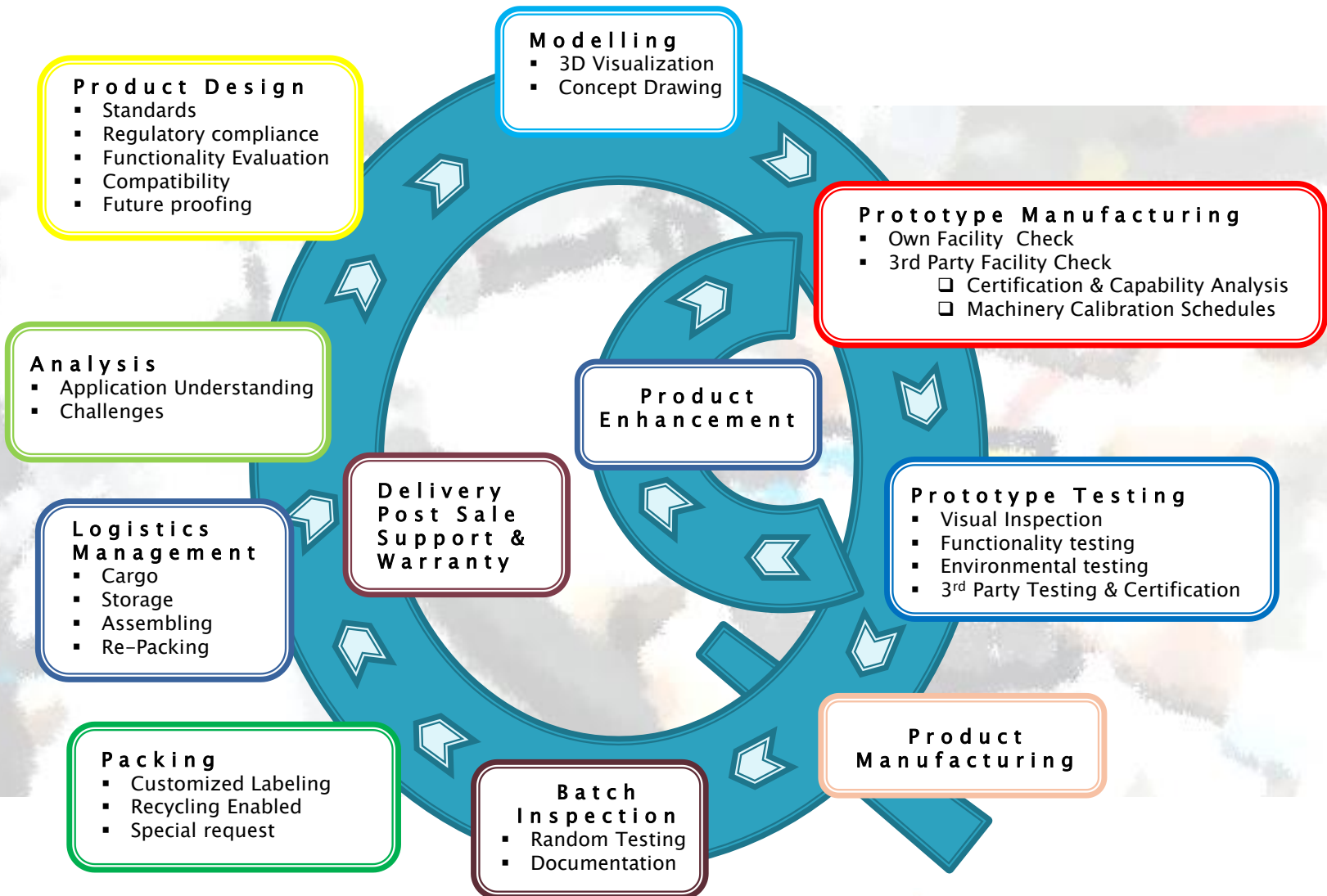


CABLE MANAGEMENT SYSTEM



- ▶ Cable Managers available in Plastic and metallic options
- ▶ Powder Coated Finish
- ▶ Type: Ring, Brush, Cover
- ▶ Horizontal 19" and 21" Mounting options
- ▶ Customized lengths on Vertical Cable Managers
- ▶ Various Slotted designs
- ▶ Bending Radius requirements incorporated into design for Cable Managers
- ▶ Support Accessories: Cable Ties, Velcro Tape, Screws & Cage Nuts

DME ProLink – Quality Control





DME PROLINK – QUALITY ASSURANCE

Performance

Intertek (US) & Delta (Denmark) :



ETL verification and EC Verification on Performance parameters of Copper Cables and accessories like;

- NEXT (Near End Cross Talk)
- Insertion Loss & Return Loss
- PSNEXT (Power Sum NEXT)
- FEXT (Far End Cross Talk)
- ACR-N (Attenuation to Cross Talk Ratio Near End), PSACR-N, ACR-F, PSACR-F
- PSANEXT (Power Sum Alien Near End Cross Talk)

Wimpey Labs (UAE) :



Fiber Optic components test for below parameters:

- Attenuation
- Insertion and Return loss
- Tensile Strength
- Crush Resistance
- Cable Bending
- Temperature Cycling

Standards Compliance:

ISO9001, ISO14001, OHSAS18001
ISO/IEC 11801-1, TIA-568.2-D, IEC 61156-5, EN 50173-1, EN 50288-10-1
IEC-60794-1-21 & 22
IEC 60332-1-1/2, IEC 60754-2, IEC 61034-1
ASTM B117-16

Safety

UL (US), Interscience (UK) :



UL Verification for Fire Safety on Copper Cables / Accessories & Fiber Cables/ Accessories.

Interscience (UK) :



Interscience Certification for Fire Safety on Copper Cables.

Exova (UK) :



Exova Certification for Non-Corrosion on Telecommunication Cabinets



Approved Facility



Approved Facility

DME Prolink – Certification

Component Level

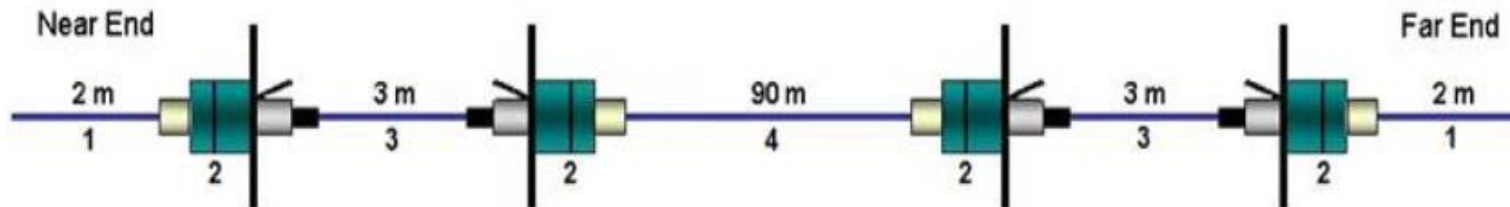
Entire connectivity product range possess component level certification on performance according to international standards.

- CAT6 Unscreened Cables & Connectivity
- CAT6A Screened and Unscreened Cables & Connectivity
- CAT8.1 Cables & Connectivity

Channel Level

DME Prolink is certified for a 4-connector channel performance.

- CAT6A Unscreened Solution
- CAT6A Screened Solution



DME PROLINK – ACCREDITATIONS

Awards



DME PROLINK was awarded the Best Passive Network infrastructure vendor for the year 2019 and 2018 by Tahawul Tech. Tahawul Tech is driven by success stories across enterprise technology, cybersecurity and the region's IT channel industry. Each year, the event inspires channel stakeholders to go above and beyond and truly optimize market opportunities to be considered as an esteemed Hot 50 brand. The exclusive event pays tribute to channel players who are resolute in their strategies to craft value and equally successful relationships for customers, partners and themselves.



- Computer News ME
- Reseller ME
- Security ME

Appreciations



“DME PROLINK is the preferred vendor for ISP and OSP telecom infrastructure for Rawdhat and Reem Island in Abu Dhabi”

“DME PROLINK Structured cabling was successfully installed for City Walk Phase 2 and Apartments 1 Project”

“Installed DME PROLINK Structured Cabling System exceeds our expectations and requirements”





DME PROLINK – APPROVALS



دائرة البلديات والنقل
DEPARTMENT OF MUNICIPALITIES
AND TRANSPORT

بلدية مدينة أبوظبي
ABU DHABI CITY MUNICIPALITY

Authority approvals on DME PROLINK products

- Micro Optical Distribution Frame
- Pre-Terminated and Splice Only Mini ODF
- Fiber Optic Splitters – SC/APC & LC/APC
- FTTH Drop Cables -1 core / 2 core / 4 core
- Low Density and High-Density FO Patch Panels
- Multicore Single Mode G.657A2 FO Cable
- Fiber Optic Accessories – Pigtails, Adapters, Patch Cords
- Complete CAT6 Unshielded Solution
- Complete CAT6A Shielded Solution
- ONU Cabinet (Residential and Commercial Grade)
- Wall Mount Cabinets
- Entire range of Floor Standing Cabinets
- Fiber Raceways
- Coaxial Solution
- Home Automation Cabinets, Cables & Accessories
- HD ODF, Splice Enclosures, FO Ribbon Cables



DME PROLINK – ACCEPTANCE

aurecon

ATKINS



AECOM

HOARE LEA

OHC
Architects & Engineers

TED JACOB ENGINEERING GROUP

EC ENGINEERING CONSORTIUM
ARCHITECTS ENGINEERS PLANNERS

APG
Architecture & Planning Group

JLW
SINCE 1875

DESIGN CENTER

Hyder

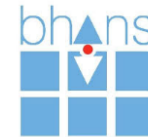
MZ ARCHITECTS



GEO
Global Engineering Office



dar al-handasah
shair and partners



ACG
ARCHITECTURAL CONSULTING GROUP
دار الاستشارات المعمارية

ARCADIS

GA ARCHITECTS & ENGINEERS
غازي عومن - مهندس استشاري

salt-ts

KHATIB & ALAMI



Eng. Adnan Saffarini Office
Architects & Engineering Consultants

CONIN

etanconsult
architecture . urban design

EMSQUARE
ENGINEERING CONSULTANT
ARCHITECTS & CIVIL ENGINEERS

SIGMART
ENGINEERING CONSULTANTS

GAJ Godwin Austen Johnson Architects

ARENCO
ABDULLAH AHMED ALMOOSA
architectural & engineering consultants

ORION
ENGINEERING CONSULTANTS

afex

dec DYNAMIC
ENGINEERING CONSULTANTS

ALAJMI
ENGINEERING CONSULTANTS

AE

NEXT
Engineering Consultants

ACE

شادن

clarke samadhin associates



Dr. Samir Abdullah Consulting Engineers

NEB
National Engineering Bureau
Architectural & Engineering Consultant

GDP

BARAJEEL
Engineering Consultants
براجيل استشارات الهندسية

waterman

شديد الهندسية
Shadid Engineering



GULF ENGINEERING & CONSULTANTS
Arch. Fahad Hussain Darwish, Arch. Hussain Hussain Darwish

DME PROLINK
CONNECTING THE GLOBE



DME PROLINK – ACCEPTANCE



إكسبو 2020
دبي، الإمارات العربية المتحدة
DUBAI, UNITED ARAB EMIRATES



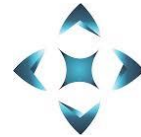
يو تي إي للتقنية
UT Technology



شرطة دبي
DUBAI POLICE



SOBHA
hartland



PALMA
DEVELOPMENT™

أرامكو السعودية
saudi aramco



NAKHEEL



OMNIYAT®



شركة السعديات للاستثمار والتطوير
Saadiyat Development and Investment Company



شرطة عجمان
AJMAN POLICE



مدارس القمة الدولية



REPTON SCHOOL



bloom.

وزارة التربية
MINISTRY OF EDUCATION



United Arab Emirates
Ministry of Interior
General Directorate of Residence
and Foreigners Affairs - Abu Dhabi



aramex

PARSONS



TIME
HOTELS



V
FIVE

ديار
DEYAAR



DME PROLINK
CONNECTING THE GLOBE



DME PROLINK – CLIENTELE



Etisalat Contract 103H for Supply of ISP and OSP products across UAE Region (2008 – 2020)



يو تي بى للتقنية
UT Technology



Al Reem Island – Complete End-to End Fiber Optic Infrastructure



إكسبو 2020
دبي، الإمارات العربية المتحدة
DUBAI, UNITED ARAB EMIRATES

EXPO 2020
Opportunity District
Mobility District
Al Wasl Plaza A & B
Parcels 7-11, ZOC



SOBHA
hartland

Sobha Hartland, Dubai





DME PROLINK – CLIENTELE



Five Hotel - 5 Star, JVC, Dubai



Time Hotel, Dubai



**Marriott 5 Star Hotel,
Marina Bloom Development**



**Montrose Millennium Hotel
Barsha South, Arjan, Dubai**





DME PROLINK – CLIENTELE



Celestia – Luxury 950 Rooms
Hotel Apartment, Dubai South

DAMAC



City Walk - City Walk Phase 2
City Walk Apartments 1, Dubai

MERAAS



Al Osaimi Beach Resorts & SPA,
Palm Jumeirah, Dubai

THE PALM



Shams Gate Towers
Abu Dhabi

سورج
Sorouh

DME PROLINK
CONNECTING THE GLOBE



DME PROLINK – CLIENTELE



EMAAR Socio Park Heights III
Dubai Hills Estate



Mohammed Bin Rashid Space Center (MBRSC)



Neighbourhood One Residence
Abu Dhabi



Hidd Al Saadiyat, Luxury Villas
Abu Dhabi





DME PROLINK – CLIENTELE



Parsons Head Quarters
Abu Dhabi

PARSONS



City of Lights – C10, C10a, C11 TAMOUH
Al Reem Island



Ministry of Education
Kuwait

وزارة التربية
MINISTRY OF EDUCATION



DAMAC Oceanscape - Mixed Use DAMAC
Complex, Al Reem Island



DME PROLINK – CLIENTELE



Repton School - Abu Dhabi



**Paris Sorbonne University
Al Reem Island, Abu Dhabi**



**Emirates International
School Expansion - Dubai**



**American University of
Sharjah - Sharjah**





DME PROLINK – CLIENTELE



Hydra Avenue Towers
Abu Dhabi



Binghatti East & West
Dubai



The One @ Palm Palm Jumeirah,
Dubai



Water Edge
Yas Island, Abu Dhabi





DME PROLINK – CLIENTELE



Aramex
Offices & Warehouse, DWC



Nestle Manufacturing Plant
Dubai World Central (DWC)



DB Schenker
Office & Warehouse, DWC



Al Fahidi Souk
Dubai





DME PROLINK – CLIENTELE



Al Tayer Motors
Across UAE Region



Saudi Aramco
Kingdom of Saudi Arabia



Dubai Police
Across UAE Region



Summit International School
Abu Dhabi





DME PROLINK – CLIENTELE



Beach Towers
Al Reem Island, Abu Dhabi



Meera Shams
Al Reem Island, Abu Dhabi



Serenia Residence
Palm Jumeirah Dubai



Marina Square
Al Reem Island, Abu Dhabi

